

SKYLINE™ SLAB

NEW FOR 2023



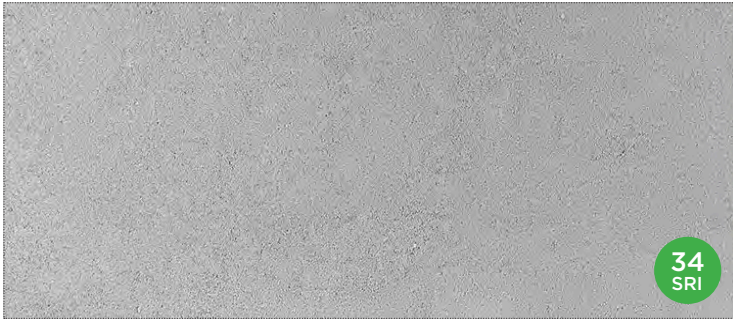
ENDURACOLOR™



GRENADA WHITE - UMBRIANO*



LIGHT GREY - CLASSIC



OPAL BLEND - SMOOTH FINISH

VISUAL APPEARANCE

The sleek sizes of Skyline are ideal for roof decks, walkways, patios or pool decks to give that modern, contemporary look.

FINISH

Skyline is available in a Classic thru-mix finish, or you can upgrade to EnduraColor for a more refined surface and long-lasting color. Skyline slabs can be further enhanced by adding EasyClean®, an integral surface protection from stains.

PRODUCT SPECIFICATIONS



24 x 24 x 2"
600 x 600 x 50mm



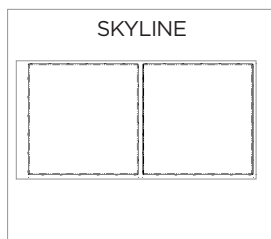
12 x 24 x 2"
300 x 600 x 50mm

EDGE DETAILS



ROUNDED EDGE

BUNDLE CONFIGURATION



TECHNICAL INFORMATION

ASTM C 936 Standard Specifications for Solid Concrete Interlocking Paving Units



Conforms to:

- C140 for Absorption 5% avg - 7% max
- Compressive Strength > 7,200 PSI avg.
- C67 for Freeze-thaw Durability
- C418 for Abrasion Durability
- Dimensional Accuracy +/- 3mm

Test results available upon request

Meets the U.S. Architectural & Transportation Barrier Compliance Board Slip-Resistance Surfaces Advisory Guidelines

SOLAR REFLECTIVE INDEX (SRI) TESTING DETAILS

Product	Solar Reflectance	SRI
Grenada White - Umbriano Finish	0.45	52 
Opal Blend - Smooth Finish	0.32	34 

LEED INFORMATION

Materials & Resources: LEED V4:

- Building Product Disclosure and Optimization
- Sourcing of Raw Materials - Sourcing of Raw Materials and Extraction • 1 point
- Sourcing of Raw Materials - Leadership Extraction Practices • 1 point
- Material Ingredient Reporting - Material Ingredient Reporting • 1 point
- Material Ingredient Reporting - Material Ingredient Optimization • 1 point
- Environmental Product Declaration • 1 point

TECHNICAL ADVANTAGES

ENDURACOLOR™

Refined surface and long-lasting colour



Factory sealed for integral stain resistance

CLASSIC

These products utilize a traditional product mix of large and small aggregates that's consistent from top to bottom with colour mixed throughout

PRODUCT DATA

Stones & Bundling	Unit Thickness	SqFt Per				Per Bundle		Soldier LnFt Per			Sailor LnFt per			Units Per			Lbs Per		
		Bundle	Layer	Section	Stone	Layers	Section	Unit	Layer	Bundle	Unit	Layer	Bundle	SqFt	Layer	Bundle	Layer	Section	Bundle
Georgetown Manufacturing																			
12 x 24"	2" (50mm)	58.13	11.63	-	1.94	5	-	0.98	-	-	1.97	-	-	-	6	30	260.6	-	1,303
24 x 24"	2" (50mm)	38.75	7.75	-	3.88	5	-	1.97	3.94	19.7	1.97	3.94	19.7	0.26	-	10	174.80	-	874.00

Notes: Sold in full bundles only on a refundable skid. **Important: A urethane rubber paver mat must be used to prevent scuffing.** All measurements are nominal. For more information, samples or custom options, please contact your Unilock Territory Manager or call 1-800-UNILOCK.

APPLICATIONS



Pedestrian



Roof Deck



Wall pairing suggestion- U-CARA

RECOMMENDED SANDS

RECOMMENDED SEALER



Romex Rompox® ECO-Fine
Pedestrian Applications only

- | Ready mixed and easy to use
- | Resin film free
- | Resistant to ants, weeds, de-icing salts
- | Made from 98% natural, recycled or renewable raw materials
- | Pressure washer safe
- | Ideal for joint widths from 5mm (1/4")

Coverage:

Colour	5-6mm Joints
Beige, Stone Grey, Anthracite 55 lb bag / 1 kg can	125 sqft / 55 lb mix



Alliance Gator G2 MAXX Sand

- | Rain safe after 15 minutes (24hr no rain if concrete overlay)
- | Sets above 32° F/ 0° C - may vary depending on weather, drainage, bedding materials and installation
- | Dust free and haze free
- | Requires only one watering
- | Four colours: Beige, Grey, Black and Ivory

Coverage:

Colour	Narrow Joints	Wide Joints
Beige, Grey, Ivory 50 lb bag	65-85 sqft	22-42 sqft
Black 50 lb bag	58-76 sqft	20-38 sqft



Alliance Gator Hybrid Low Gloss + Colour Enhancer

- | Water-based
- | Low gloss finish
- | Vibrant Colour Enhancer
- | Rain safe after 24 hours

Coverage:

Size	Area
3.78 L / 1 U.S. gal.	200 sqft
18.9 L / 5.28 U.S. gal.	1,000 sqft

*Please refer to Sands & Sealers on pages 190-202 for more detailed information.

Unsure of bonded vs. unbonded product recommendations? Please contact your Unilock Territory Manager for more information.