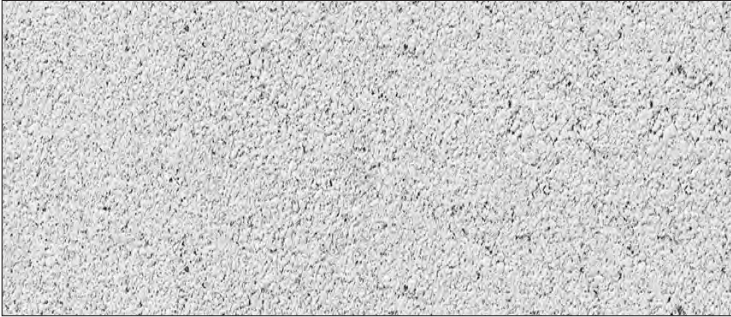


# REVELA™ SLAB

ENDURACOLOR™



FROST **NEW**



METALLIC GREY

18  
SRI



SAVANNAH

## VISUAL APPEARANCE

Large size slab with a unique textured finish to complement current architectural design trends.

## FINISH

Shotblasted.

## PRODUCT SPECIFICATIONS



### SLAB

21 x 35 x 2<sup>3</sup>/<sub>8</sub>"

540 x 890 x 60mm

## EDGE DETAILS



ROUNDED EDGE

\*Colour selection should be chosen from actual samples.

**TECHNICAL INFORMATION**

**ASTM C 936 Standard Specifications for Solid Concrete Interlocking Paving Units**


Conforms to:

- C140 for Absorption 5% avg - 7% max
- Compressive Strength > 7,200 PSI avg.
- C67 for Freeze-thaw Durability
- C418 for Abrasion Durability
- Dimensional Accuracy +/- 3mm

Test results available upon request

Meets the U.S. Architectural & Transportation Barrier Compliance Board Slip-Resistance Surfaces Advisory Guidelines

**SOLAR REFLECTIVE INDEX (SRI) TESTING DETAILS**

| Product       | Solar Reflectance | SRI  |
|---------------|-------------------|--|
| Metallic Grey | 0.19              | 18  |

**TECHNICAL ADVANTAGES**

**ENDURACOLOR™**

Refined surface and long-lasting colour

Enhanced surface appearance

**PEDESTRIAN FRIENDLY**

Not recommended for vehicular loads

**LEED INFORMATION**

**Materials & Resources: LEED V4:**

- Building Product Disclosure and Optimization
- Sourcing of Raw Materials - Sourcing of Raw Materials and Extraction • **1 point**
- Sourcing of Raw Materials - Leadership Extraction Practices • **1 point**
- Material Ingredient Reporting - Material Ingredient Reporting • **1 point**
- Material Ingredient Reporting - Material Ingredient Optimization • **1 point**
- Environmental Product Declaration • **1 point**

**PRODUCT DATA**

| Stones & Bundling               | Unit          |        | SqFt Per |         |       |        | Per Bundle |      | Soldier LnFt Per |        |      | Sailor LnFt per |        |      | Units Per |        |       | Lbs Per |        |  |
|---------------------------------|---------------|--------|----------|---------|-------|--------|------------|------|------------------|--------|------|-----------------|--------|------|-----------|--------|-------|---------|--------|--|
|                                 | Thickness     | Bundle | Layer    | Section | Stone | Layers | Section    | Unit | Section          | Bundle | Unit | Section         | Bundle | SqFt | Section   | Bundle | Layer | Section | Bundle |  |
| <b>Georgetown Manufacturing</b> |               |        |          |         |       |        |            |      |                  |        |      |                 |        |      |           |        |       |         |        |  |
| 21" x 35"                       | 2 3/8" (60mm) | 62.78  | 10.46    | -       | 5.23  | 6      | -          | 1.77 | -                | 21.24  | 2.91 | -               | 35.46  | 0.19 | -         | 12     | 287   | -       | 1,723  |  |

Notes: Sold in full bundles only on a refundable skid. **Important: A urethane rubber paver mat must be used to prevent scuffing.** All measurements are nominal. For more information, samples or custom options, please contact your Unilock Territory Manager or call 1-800-UNILOCK.

**APPLICATIONS**



Pedestrian



Roof Deck



\*Wall pairing suggestion- U-CARA™ Wall or Lineo™ Dimensional Stone

**RECOMMENDED SANDS**



**Romex: Rompox™ ECO-Fine**  
Pedestrian Applications only

- | Ready mixed and easy to use
- | Resin film free
- | Resistant to ants, weeds, de-icing salts
- | Made from 98% natural, recycled or renewable raw materials
- | Pressure washer safe
- | Ideal for joint widths from 5mm (1/4")

**Coverage:**

| Colour  | 5-6mm Joints         |
|---|----------------------|
| Beige, Stone Grey, Anthracite<br>55 lb bag / 1 kg can | 125 sqft / 55 lb mix |



**Alliance Gator G2 MAXX Sand**

- | Rain safe after 15 minutes (24hr no rain if concrete overlay)
- | Sets above 32° F/ 0° C - may vary depending on weather, drainage, bedding materials and installation
- | Dust free and haze free
- | Requires only one watering
- | Four colours: Beige, Grey, Black and Ivory

**Coverage:**

| Colour                          | Narrow Joints | Wide Joints |
|---------------------------------|---------------|-------------|
| Beige, Grey, Ivory<br>50 lb bag | 65-85 sqft    | 22-42 sqft  |
| Black<br>50 lb bag              | 58-76 sqft    | 20-38 sqft  |

**RECOMMENDED SEALER**



**Alliance Gator Hybrid Low Gloss + Colour Enhancer**

- | Water-based
- | Low gloss finish
- | Vibrant Colour Enhancer
- | Rain safe after 24 hours

**Coverage:**

| Size                    | Area       |
|-------------------------|------------|
| 3.78 L / 1 U.S. gal.    | 200 sqft   |
| 18.9 L / 5.28 U.S. gal. | 1,000 sqft |

\*Please refer to Sands & Sealers on pages 190-202 for more detailed information.

Unsure of bonded vs. unbonded product recommendations? Please contact your Unilock Territory Manager for more information.