

# SIENASTONE™ SMOOTH

## CLASSIC



GRANITE BLEND



SAFARI **NEW**

### VISUAL APPEARANCE

A more modern, clean looking solution for heavy-duty walls.

### FINISH

Smooth, linear look.

### PRODUCT SPECIFICATIONS



**STANDARD 375**  
14¾ x 47¼ x 7"  
375 x 1200 x 180mm



**CORNER UNIT 375**  
14¾ x 38¾ x 7"  
375 x 1200 x 180mm



**COPING 383**  
15 x 47¼ x 7"  
383 x 1200 x 180mm



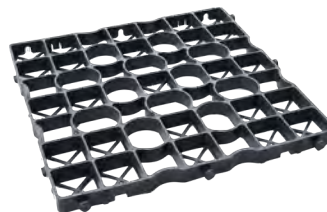
**CLOSED END COPING LEFT/RIGHT**  
15 x 47¼ x 7"  
383 x 1200 x 180mm

*See Steps, Treads & Coping section page 177 for SienaStone Smooth Steps*

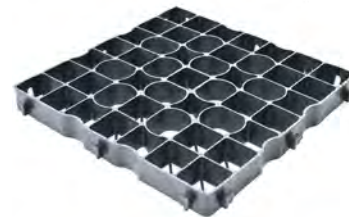


- Creates a revolutionary Reinforced Soil Structure (RSS) with high tensile and compressive strength to maximize the performance of pavement structures.
- Extremely permeable, long lasting, durable and environmentally friendly. Lightweight and easy to handle.
- Simple and quick installation.
- Allows for easy repairs / adjustments after installation.

See page 186-187 for more details.



**DRIVECEL30 LIGHT DUTY**  
20 x 20 x 1.2"  
500 x 500 x 30mm



**DRIVECEL50 HEAVY DUTY**  
20 x 20 x 2"  
500 x 500 x 50mm

\*Colour selection should be chosen from actual samples.

**TECHNICAL INFORMATION**

**ASTM C 1372 Standard Specifications for Dry-Cast Segmental Retaining Wall Units**

Conforms to:

- C140 for Absorption and Compressive Strength > 3000 PSI
- C1262 for Freeze Thaw Durability <1% mass loss
- C1372 Overall dimensional variations permissible for width, height and length +/-3 mm

**Unilock standards exceed 5,000 PSI for SienaStone™ Smooth**

- 4% absorption avg.
  - 5% absorption max.
  - Dimensional Accuracy +/-3 mm
- Test results available upon request*

**Meets the U.S. Architectural & Transportation Barrier Compliance Board Slip-Resistance Surfaces Advisory Guidelines**

**LEED INFORMATION**

**Materials & Resources: LEED V4:**

- Building Product Disclosure and Optimization
- Sourcing of Raw Materials - Sourcing of Raw Materials and Extraction • **1 point**
- Sourcing of Raw Materials - Leadership Extraction Practices • **1 point**
- Material Ingredient Reporting - Material Ingredient Reporting • **1 point**
- Material Ingredient Reporting - Material Ingredient Optimization • **1 point**
- Environmental Product Declaration • **1 point**

If required, summary test data shall be provided with the SRW Design and shall include:

- a) SRW Unit shear strength as per ASTM D6916
- b) SRW Unit - Geosynthetic Reinforcement connection strength as per ASTM D6638

**PRODUCT DATA**

Stones & Bundling	Face Feet Per		Linear Feet Per		Units Per		Per Bundle		Lbs Per	
	Bundle	Unit	Bundle	Unit	Bundle	Face Feet	Layers	Sections	Unit	Bundle
<b>Gormley Manufacturing</b>										
Standard 375	20.93	2.33	36.00	4.00	9	0.43	3	-	394	3,546
Coping	20.93	2.33	36.00	4.00	9	0.43	3	-	395	3,555
Corner Unit (double unit)	27.27	3.03	46.71	5.19	3	0.33	3	-	407	3,665
Closed end Coping (left & right)	20.93	2.33	36.00	4.00	9	0.43	3	-	395	3,555

Notes: SienaStone™ Smooth corners are sold together as double units, one left and one right. Engineering services are available. For more information, samples or custom options, please contact your Unilock Territory Manager or call 1-800-UNILOCK.

**APPLICATIONS**



Garden Walls & Seat Walls



Retaining Walls

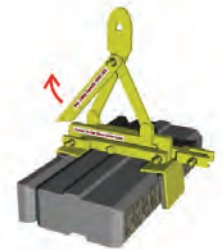


Steps



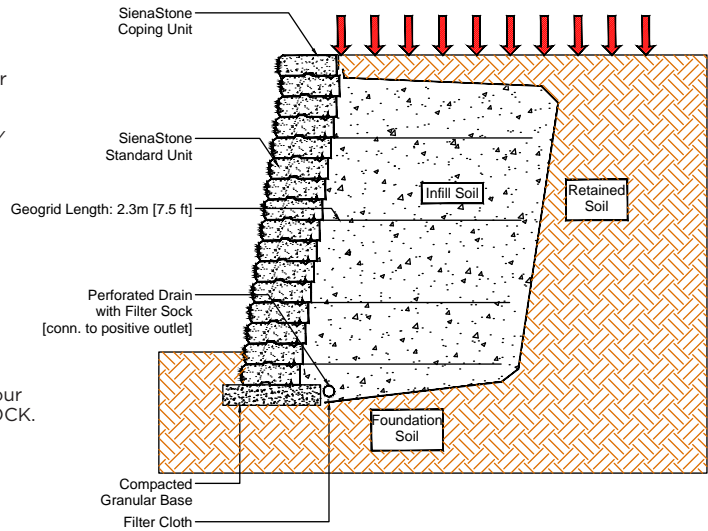
Refer to the SienaStone™ Installation Guide for more information.

<https://www.risistone.com/installation-guides/>



Clamps available at Unilock. Please contact your Unilock Territory Manager or call 1-800-UNILOCK.

**GEOGRID WALL SECTION**



Cross sections are examples, and must not be used for construction.

**\*Things to know:**

For SienaStone™, Unilock, through **Risi Stone Systems International**, can provide preliminary site engineering for most commercial projects. Soils information, site drawings, and loading requirements are some of the information details required in order to provide this preliminary site engineering.

Retaining wall engineering software is also available free of charge. Contact your local Unilock Territory Manager for details.

**For more information please visit <https://www.risistone.com/product/sienastone/>**